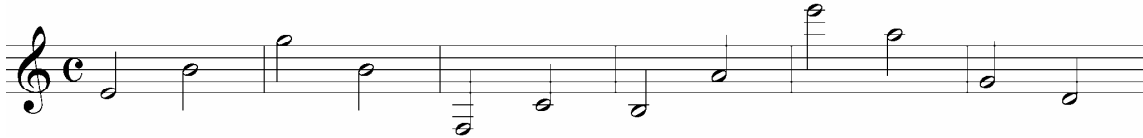
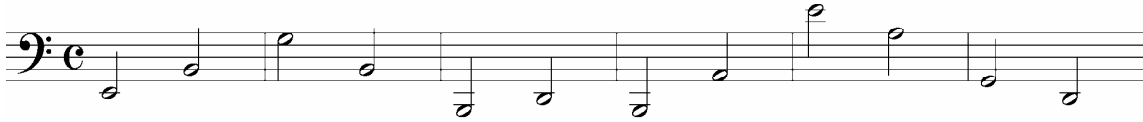


1. Write letter names **AND** the interval in each measure. (36 pts)



2. Write each chord on **both** treble and bass clef. Use accidentals, not key signatures, if needed. (5 pts)

IV in C major

IV in G major

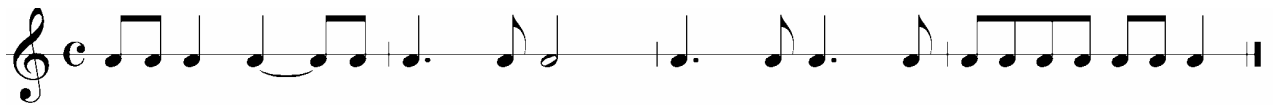
I in G major

V7 in G major

V7 in C major

A grand staff with five empty measures for writing chords. The staff is divided into five equal-width boxes, each containing a treble clef and a bass clef.

3. Write counts in each measure. (2 pts)
(Ex. 1+2+3+4+)



4. Write C major DESCENDING scale, C to C, in the bass clef. Use accidentals, not key signatures, if needed. (7pts)

A single bass clef staff for writing a descending C major scale.