

Music 121  
Written Test 2 (50 pts)

**Staple 2 pages before you submit**  
Instructor: Jaeryoung Lee

Name \_\_\_\_\_

1. Write each chord on **both** treble and bass clef. (10 pts) Use accidentals, not key signatures, if needed.

IV in G major      V7 in G major      IV in F major      V7 in F major      V7 in C Major

A grand staff consisting of five measures. Each measure contains a treble clef on the top staff and a bass clef on the bottom staff. The staves are empty, intended for the student to write the specified chords.

2. Indicate whether the distance between each group of notes is a half step (H) or a whole step (W). (2 pts)

A musical staff in treble clef with a common time signature. The notes and accidentals are: F# (quarter), G (quarter), F# (quarter), G# (quarter), F (quarter), G# (quarter), F (quarter), G (quarter). Below the staff are four blank lines for identifying the intervals between these notes.

3. Write F major **DESCENDING** scale, F to F, in the treble clef. Use accidentals, not key signatures, if needed. (8pts)

An empty treble clef staff with a common time signature, intended for the student to write a descending F major scale from F4 to F3.

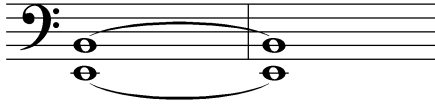
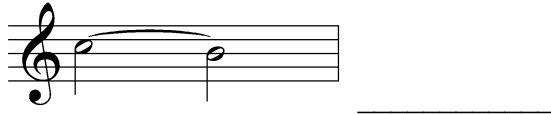
4. Write G major **DESCENDING** scale, G to G, in the bass clef. Use accidentals, not key signatures, if needed. (8pts)

An empty bass clef staff with a common time signature, intended for the student to write a descending G major scale from G2 to G1.

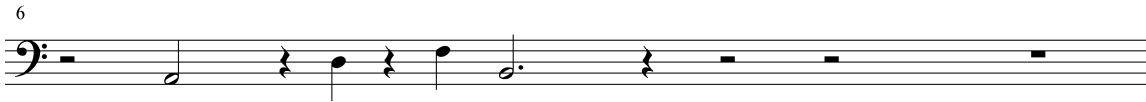
5. Identify the following as a slur or a tie (3 pts)

A musical staff in bass clef with a common time signature. It contains five quarter notes: G1, F1, E1, D1, and C1. A slur is drawn over all five notes.

\_\_\_\_\_



6. Add bar lines and a double bar to complete each measure. (9pts)



7. Write counts in each measure. For example, 1 + 2 + 3 + 4 +. (6 pts)



8. Determine the time signature **AND** write counts **under** each measure. For example, 1+ 2+ 3+ 4+. (4 pts)



Time signature \_\_\_\_\_



Time signature \_\_\_\_\_

✓ **STAPLE 2 PAGES BEFORE YOU SUBMIT.**