

MUSIC 215B
Written Test 2 (50pts)

Name _____
Instructor: Jaeryoung Lee

1. Draw the notes for a 7th chord in BOTH clefs. (10 pts)
C# half-dim7. RT F# min7. 1st Inv. Ab maj7. RT E min7th, 2nd G dim7 2nd

A musical staff consisting of two systems of five-line staves. The top system is a grand staff with a treble clef on the upper staff and a bass clef on the lower staff. The bottom system is identical. The staves are empty, intended for drawing notes for five different 7th chords.

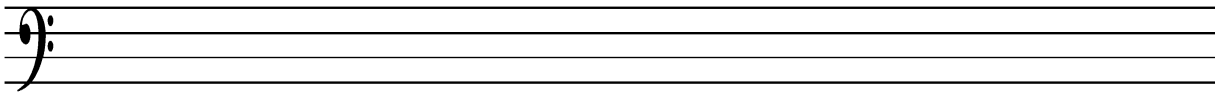
2. Complete SATB voicing of Rootless 9th chords in BOTH clefs. (20 pts)
ii9 in G ma ii9 in Gb ma V9 in F ma Ima9 in A ma V9 in Ab ma

A musical staff consisting of two systems of five-line staves. The top system is a grand staff with a treble clef on the upper staff and a bass clef on the lower staff. The bottom system is identical. The staves are empty, intended for completing SATB voicings for five different rootless 9th chords.

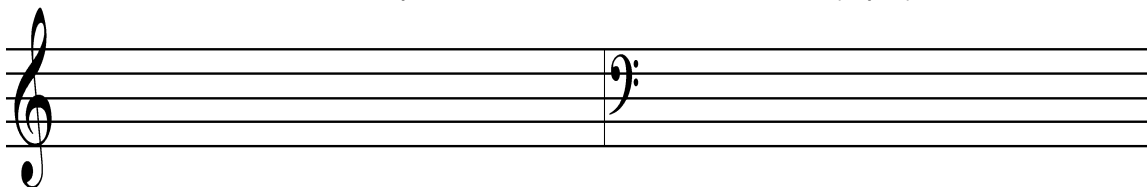
ii9 in D maj V9 in Dbma ii9 in Ebma Ima9 in B ma V9 in Bb ma

A musical staff consisting of two systems of five-line staves. The top system is a grand staff with a treble clef on the upper staff and a bass clef on the lower staff. The bottom system is identical. The staves are empty, intended for completing SATB voicings for five different rootless 9th chords.

3. Write **G MINOR BLUES DESCENDING** scale, G to G, in the bass clef. Use accidentals, not key signatures, if needed. (8 pts)



4. Write the order of sharps in **BOTH** treble and bass clef. (2 pts)



5. Complete 3-7 shells in **BOTH** clefs. (10 pts)
Pitch Range: E above the middle C to D above the bass C

ii7 in Db ma V7 in Eb ma ii7 in A ma V7 in C# ma ii7 in F# ma

PLEASE STAPLE THESE TWO PAGES BEFORE YOU SUBMIT.